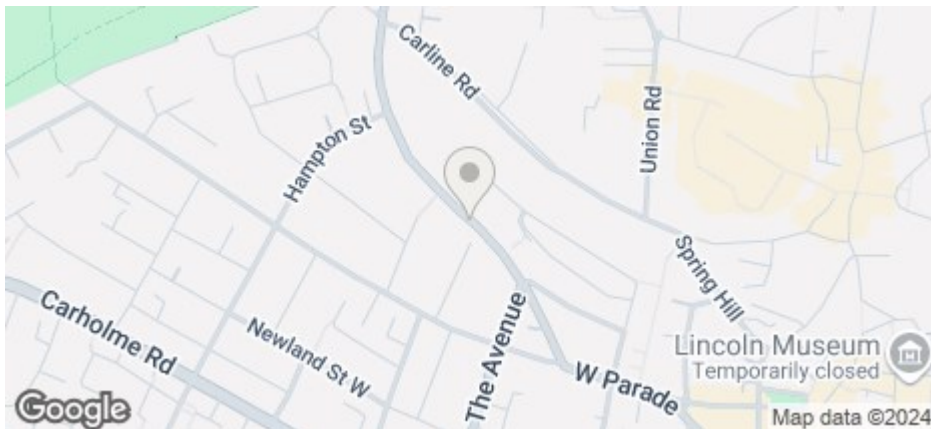




34 Yarborough Road, Lincoln, Lincs, LN1 1HS

£155 Per Week

COUNCIL TAX BAND: C



- Large design-led ensuite bedrooms with built-in wardrobes providing substantial storage space
- Large built-in wardrobes & Custom made desks in every bedroom
- Premium finish & fittings throughout
- Internet with mesh wifi
- Dishwasher & tumble dryer included
- Contemporary style
- Price displayed is per person based on 6 tenants renting the property
- Short walk to University
- Council Tax Band C
- Available for 25/26

Rights & Restrictions

Together with and subject to all rights of passage way and drainage common to and which are now used and enjoyed by the above described premises and the adjoining premises known as Numbers 36

and 38 Yarborough Road aforesaid. "The wall of such message dividing the same from 36 Yarborough Road being a party wall and repairable and maintainable as such.

For an indication of specific broadband speeds and supply, or coverage in the area, we suggest you visit: <https://checker.ofcom.org.uk/en-gb/broadband-coverage>

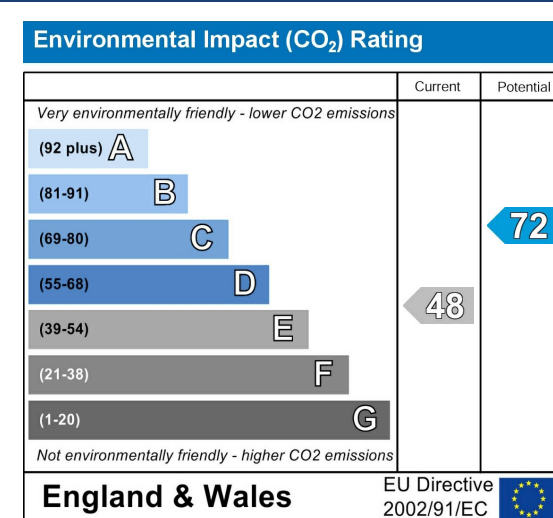
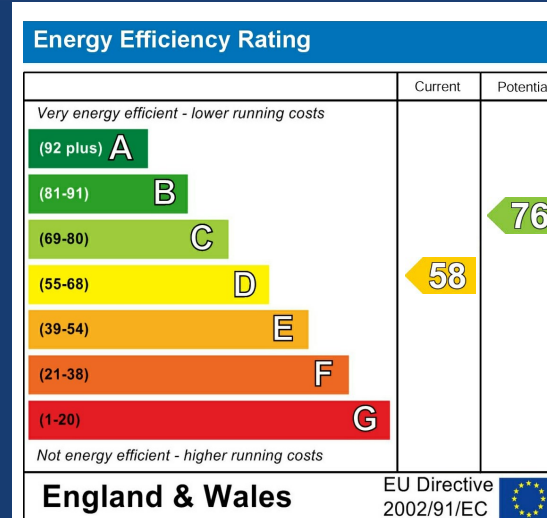
For an indication of specific mobile phone speeds and supply, or coverage in the area, we recommend you visit: <https://checker.ofcom.org.uk/en-gb/mobile-coverage#pc=LN12PR&uprn=10013808803>



Number of tenants per property	Gas Allowance (Kwh)	Electric Allowance (Kwh)*	Water Allowance (m3)
1	10000	3000	125
2	13000	3400	130
3	16000	4000	165
4	20000	5000	190
5	25000	6000	215
6	30000	7000	240
7	34000	8000	270
8	38000	9000	290
9	41000	10000	310
10	44000	11000	330

If there is no gas in the property (electric heating and hot water) the Electric Allowance Kwh is doubled.

The chart details the maximum usage allowance of gas, water, and electricity for a 50-week tenancy in accordance with the number of tenants for the property (should the tenancy term vary from 50 weeks, the allowance will be apportioned accordingly to cover the term of the tenancy). Should these figures be exceeded the Landlord reserves the right to levy a charge to cover the cost for the additional usage. It is the Tenants responsibility to monitor their own usage.



Spacious six bedroom en-suite student house in the West End, close to the City Centre and Lincoln University. All en-suite bedrooms with: Smart TVs and in the lounge. Premium finish & fittings throughout. Internet with mesh wifi.

Up to 2 parking permits available through City of Lincoln Council permit scheme for a fee, but parking is not permitted immediately outside the property and is restricted to zone 1B. Gas central heating.

Price displayed is as per person per week

The rent as advertised per week is the rent due per person for a student studying a full-time course with at least 21 hours of study in term time per week attending 24 weeks per annum.

The total rent due for the property will increase by £37.45 per week for any non-students (rental shares can be apportioned per tenant, meaning one or more tenants can contribute to this).

The deposit payable on the first day of your tenancy is just ****£200.00**** per person along with the first four weeks rent, after this the rent can be paid in instalments that coincide with your student loan.

The property comes furnished and includes utilities and associated building running costs. Utilities are subject to a fair usage policy as detailed in the attached brochure and the Tenancy Agreement.

Don't miss out on this great property. Contact our friendly team at Cloud Lettings today to arrange your viewing or book a slot online for a time convenient to you!

Call - 01522 802020

email - info@cloudlettings.co.uk

WhatsApp - 07908 557770

Cloud Lettings are a member of the Tenancy Deposit Scheme, ARLA, The Property Ombudsman, and are part of the Propertymark Client Money Protection scheme. Cloud Lettings are also an Associate Agent of the City of Lincoln Trusted Landlord Scheme.

For further details of all tenancy fees, please see our website here:
<http://www.cloudlettings.co.uk/about>

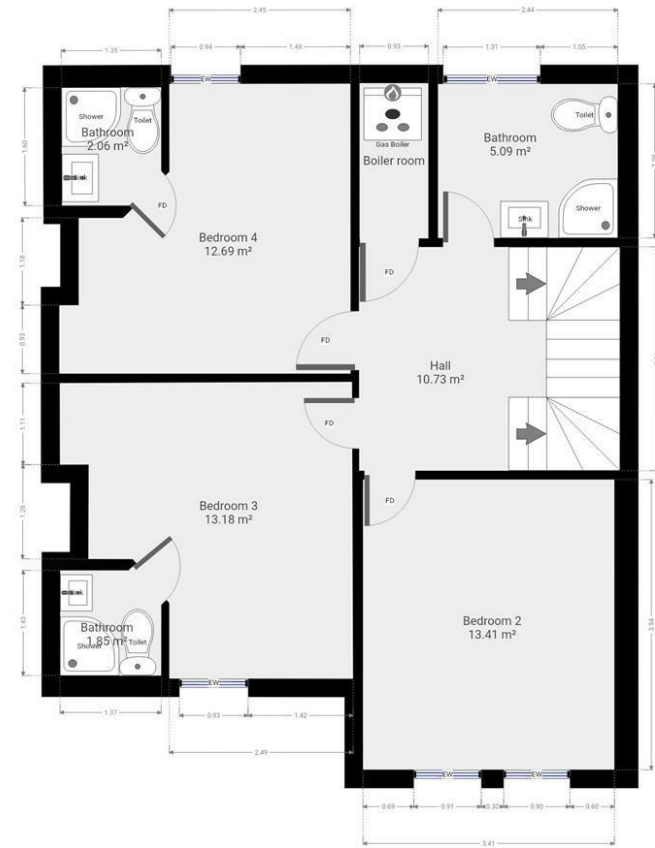
Any information collected from you will be processed in accordance with the General Data Protection Regulation. Full details of how Cloud Lettings Ltd process your information can be found on our website here:
<http://www.cloudlettings.co.uk/about-cloud-lettings/privacy-policy/>.

Terms and conditions apply. Contact the office for more information.

The property is affected by known rights or restrictions; open the brochure for further details.



Floor plan measurements are approximate and for illustrative purposes only. While we do not doubt the floor plans accuracy, we make no guarantee, warranty or representation as to the accuracy and completeness of the floor plan. You or your advisors should conduct a careful, independent investigation of the property to determine to your satisfaction as to the suitability of the property for your special requirements.



Floor plan measurements are approximate and for illustrative purposes only. While we do not doubt the floor plans accuracy, we make no guarantee, warranty or representation as to the accuracy and completeness of the floor plan. You or your advisors should conduct a careful, independent investigation of the property to determine to your satisfaction as to the suitability of the property for your special requirements.

Room size measurements are achieved by measuring between internal walls.

Where sloped ceilings are present, room size is measured where the height is a minimum of 1.5m