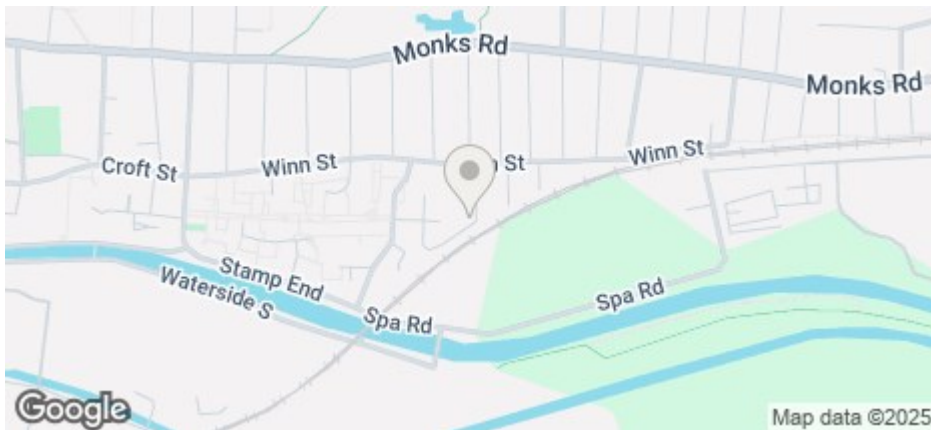




19 Eastfield Street, Lincoln, LN2 5ES

£940 PCM

COUNCIL TAX BAND: A

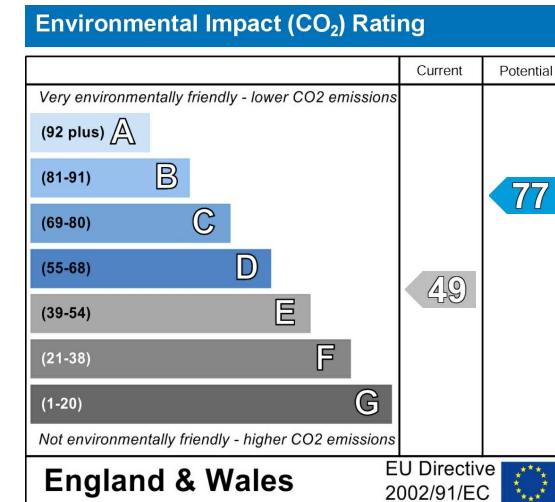
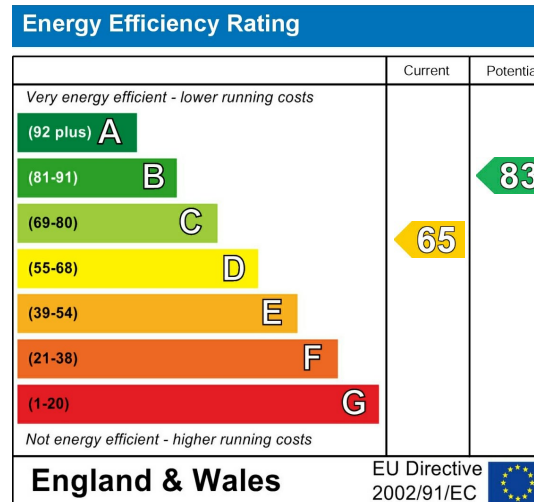


- Two large reception rooms
- Family bathroom with shower over bath
- On street parking
- Council tax Band A
- Modern kitchen
- Three bedrooms
- Gas central heating

For an indication of specific broadband speeds and supply, or coverage in the area, we suggest you visit: <https://checker.ofcom.org.uk/en-gb/broadband-coverage>

For an indication of specific mobile phone speeds and supply, or coverage in the area, we recommend you visit: <https://checker.ofcom.org.uk/en-gb/mobile-coverage#pc=LN12PR&uprn=10013808803>

Unless otherwise stated, there is no known flooding history at this property. To check the flood risk of the area visit: <https://check-long-term-flood-risk.service.gov.uk/postcode>



Located in an excellent position close to Lincoln City Centre and Lincoln Hospital, this three-bedroom home is just steps away from the picturesque Arboretum Park.

Utilities: The rent does not include utility bills, internet, Council Tax or TV licence payments.

The property boasts two spacious reception rooms, one featuring a charming decorative fireplace. The large, modern kitchen is well-equipped with an oven, hob, and extractor fan, while the ground floor also offers a family bathroom with a shower over the bath.

Upstairs, you'll find three well-proportioned bedrooms, one of which benefits from a built-in storage cupboard, as well as a convenient WC.

Externally, the property features an enclosed yard with an outbuilding.

Additional benefits include gas central heating. On street parking.

Contact our friendly team at Cloud Lettings today to find out more about our pre-application process for this property.

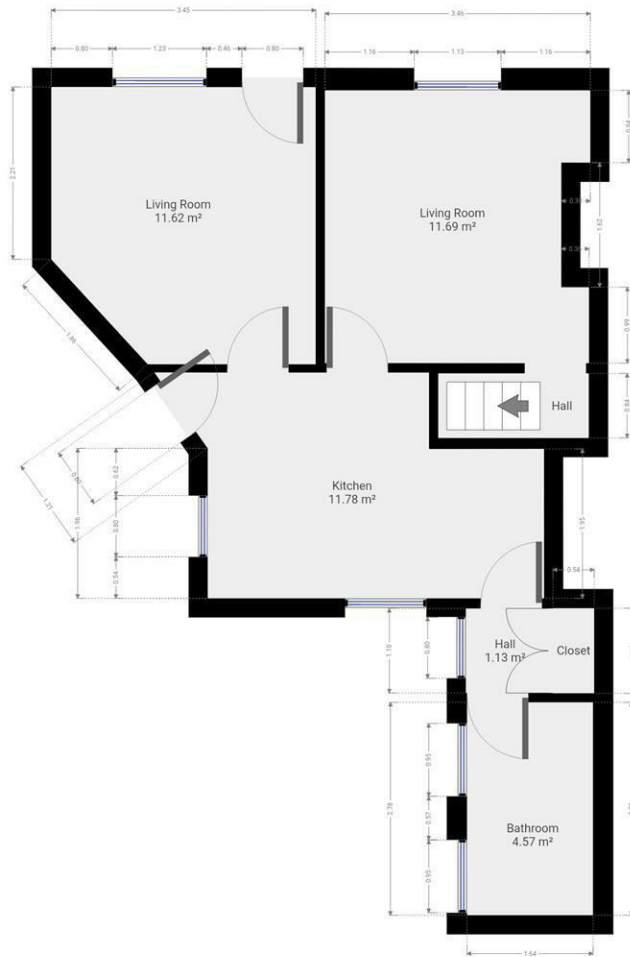
Call - 01522 802020

email - info@cloudlettings.co.uk

Cloud Lettings are a member of the Tenancy Deposit Scheme, ARLA, The Property Ombudsman, and are part of the Propertymark Client Money Protection scheme. Cloud Lettings are also an Associate Agent of the City of Lincoln Trusted Landlord Scheme.

For further details of all tenancy fees, please see our website.

Any information collected from you will be processed in accordance with the General Data Protection Regulation. Full details of how Cloud Lettings Ltd process your information can be found on our website.



Floor plan measurements are approximate and for illustrative purposes only. While we do not doubt the floor plans accuracy, we make no guarantee, warranty or representation as to the accuracy and completeness of the floor plan. You or your advisors should conduct a careful, independent investigation of the property to determine to your satisfaction as to the suitability of the property for your special requirements.



Floor plan measurements are approximate and for illustrative purposes only. While we do not doubt the floor plans accuracy, we make no guarantee, warranty or representation as to the accuracy and completeness of the floor plan. You or your advisors should conduct a careful, independent investigation of the property to determine to your satisfaction as to the suitability of the property for your special requirements.

Room size measurements are achieved by measuring between internal walls.

Where sloped ceilings are present, room size is measured where the height is a minimum of 1.5m